

# NUTP51 Series

## 24V Continuous Hy-Brite LED Tape Light

Source: 2.7W/ft. LED  
210lm/ft.

Type \_\_\_\_\_

Project \_\_\_\_\_

Catalog No. \_\_\_\_\_

Notes \_\_\_\_\_

### PRODUCT DESCRIPTION

Hy-Brite LED Tape is the perfect solution when you need more light than Standard LED Tape but less than high output LED Tape. Producing 210 lumens, the Hy-Brite uses the same connectors and accessories as the High Output LED Tape. The low profile tape is the ideal for coves, architectural details, under and in cabinets, toe kicks, and back lighting. IP44 rated,

### FEATURES

- 20' or 100' Spool - Economical and Efficient
- 24V DC system
- 210 lumens per foot
- Single color illumination in three color temperatures (2700K, 3000K or 4200K)
- Field cuttable every 4" or 6 LEDs
- Easy to install; pre-applied 3M™ tape or acrylic mounting clips (included)

### INCLUDED WITH EVERY 100' ROLL

(1) 100' Tape Light Roll, (50) Acrylic Mounting Clips with screws and (1) 12" Power Line Interconnector

### INCLUDED WITH EVERY 20' ROLL

(1) 20' Tape Light Roll, (10) Acrylic Mounting Clips with screws and (1) 12" Power Line Interconnector

### SPECIFICATION

**Construction:** The Continuous LED Tape can be cut every 6 LEDs at marked 4" intervals, cutting does not effect circuit. Easy flip style snap-on connectors connect to the cut ends.

**Mounting:** Each Tape Light includes pre-applied 3M™ adhesive tape for simple installation. Optional channels and clear acrylic clips are available.

### LIMITATIONS

- Not rated or warranted for enclosed applications
- Tape light and most accessories are not rated for in-wall installation (NATL-W16-2 is rated for in-wall installations)
- Do not install in where LED chips are exposed to direct sunlight, as damage to the phosphor will occur

### ELECTRICAL

**Input Voltage:** 24V

**Lumens / Wattage:** 210lm / 2.7W per foot

**Color Temperature:** 2700K, 3000K or 4200K

**CRI:** 90+ CRI

**Operating Temp.:** -25°C to 45°C

**Dimming:** Dimmable with Dimmable LED Driver

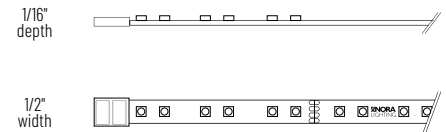
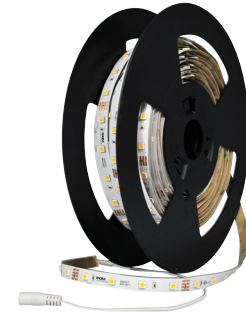
**Maximum Run Length:** 32'

### LABELS AND LISTINGS

- cULus Listed for Damp Location
- IP44 rated
- 3-Year Limited Warranty



### PRODUCT IMAGES & DIMENSIONS



## 24V Continuous Hy-Brite LED Tape Light

Length	CCT / CRI
<b>NUTP51-W20LED</b> = 20' Roll	<b>927</b> = 2700K / 90 CRI
<b>NUTP51-W100LED</b> = 100' Roll	<b>930</b> = 3000K / 90 CRI
<b>NUTP51-WFTLED</b> = Custom Cut (specify ft.)	<b>942</b> = 4200K / 90 CRI

Example: **NUTP51-W100LED930** = 100' 24V Continuous Hy-Brite LED Tape Light, 3000K / 90 CRI

# NUTP51 Series

24V Continuous Hy-Brite LED Tape Light Accessories

Type
Project
Catalog No.
Notes



## Flip Type DC Plug Connector

<b>NATLCFC-609/3A</b>	3"
<b>NATLCFC-609/12A</b>	12"
<b>NATLCFC-609/48A</b>	48"
<b>NATLCFC-609/96A</b>	96"

Flip connector connects NUTP51 series to a driver.



## Flip Type Splice Connector

<b>NATLCFC-608/3A</b>	3"
<b>NATLCFC-608/12A</b>	12"
<b>NATLCFC-608/48A</b>	48"
<b>NATLCFC-608/96A</b>	96"

Flip connector connects NUTP51 series to 24V input source (No DC plug)



## Flip Type Interconnector Cable

<b>NATLCFC-603A</b>	3"
<b>NATLCFC-606A</b>	6"
<b>NATLCFC-612A</b>	12"
<b>NATLCFC-624A</b>	24"
<b>NATLCFC-648</b>	48"
<b>NATLCFC-672A</b>	72"
<b>NATLCFC-696A</b>	96"

Allows easy linking of two pieces of NUTP51 series. Cables are flexible and can be moved in any direction.



## Flip Type Link Connector

<b>NATLCFC-600A</b>	12mm
---------------------	------

Allows connecting two pieces of NUTP51 series



## Clear Acrylic Mounting Clips

<b>NATHR-685</b>	Pack of 15
------------------	------------

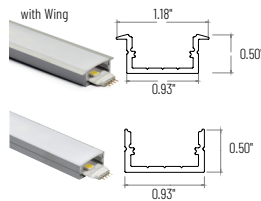
Use in conjunction with adhesive backing to attach Tape Light to a surface. Clear acrylic mounting clips are included with every Tape Light roll.



## 4' Channel

<b>NATHR-680</b>	Aluminum
------------------	----------

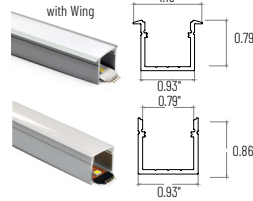
Mounts Tape Light to various surfaces. Field cuttable.



## 4' Shallow Channels

<b>NATL-C23A</b>	Aluminum w/Wing
<b>NATL-C24A</b>	Aluminum
<b>NATL-C24B</b>	Black
<b>NATL-C24W</b>	White

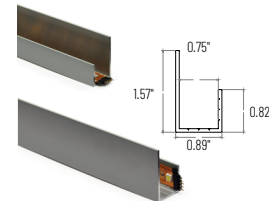
Used to mount tape light to various surfaces. Plastic diffuser and end caps included. Field cuttable.



## 4' Deep Channels

<b>NATL-C25A</b>	Aluminum w/Wing
<b>NATL-C26A</b>	Aluminum
<b>NATL-C26B</b>	Black
<b>NATL-C26W</b>	White

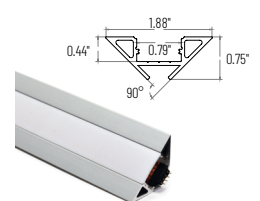
Used to mount tape light to various surfaces. Plastic diffuser and end caps included. Field cuttable.



## 4' J-Style Channels

<b>NATL-C27A</b>	Aluminum
------------------	----------

Used to mount tape light to various surfaces. Field cuttable.



## 4' Corner Channels

<b>NATL-C28A</b>	Aluminum
<b>NATL-C28B</b>	Black
<b>NATL-C28W</b>	White

Plastic diffuser and End caps included. Field cuttable

# NUTP51 Series

## 24V Continuous Hy-Brite LED Tape Light Drivers & Accessories

Type

Project

Catalog No.

Notes



Direct Plug-In LED Driver

**NATL-524W** 24V 24W  
**NATL-545W** 24V 45W

**Input Voltage:** 120V  
**Cable Length:** 6'



Direct Plug-In LED Driver

**NATL-596W** 24V 96W

**Input Voltage:** 120V  
**Input Wire:** 5' Cord and Plug  
**Output Wire:** 44" Power line connector



Class II Hardwire LED Driver

**NATL-5030HW** 24V 30W  
**NATL-5060HW** 24V 60W  
**NATL-5100HW** 24V 100W

**Input Voltage:** 120-240V  
**Dimming:** Non-Dimmable  
**Includes:** 10' Power Line Connector



Class II Hardwire LED Driver  
0-10V Dimming

**NATL-5096-24-HWD10** 24V 96W

**Input Voltage:** 120-277V  
**Dimming:** 0-10V  
**Includes:** 10' Power Line Connector



Class II Hardwire LED Driver  
ELV Dimming

**NATLED-5040HW** 24V 40W

**NATLED-5075HW** 24V 75W

**Input Voltage:** 120V  
**Dimming:** ELV  
**Includes:** 10' Power Line Connector



Class II Hardwire LED Driver  
with Breakers, MLV Dimming

**NMT-303/24C2D1** 3 x 100W

**Input Voltage:** 120V  
**Dimming:** Magnetic Low Voltage  
**Breakers:** (3) 100W  
**Includes:** (3) 10' Power Line Connectors



Class II Hardwire LED Driver  
with Regulator, MLV Dimming

**NMTD-60/24D** 24V 60W

**NMTD-96/24D** 24V 96W

**Input Voltage:** 120-277V  
**Dimming:** Magnetic Low Voltage  
**Regulator:** Integral regulator for constant current and voltage  
**Includes:** 10' Power Line Connector



NEXUS® All-in-One LED Driver  
and Dimmer

**NATL-SWEX100/24A** 24V 100W

**NATL-SWEX/3FP** 3 Face Plates

**Input Voltage:** 120V  
**Dimming:** Integral Dimmer  
**Description:** Eliminates the driver and allows 120V input and 24V output from a single gang box. 100-5% dimming and on/off switch.



Power Line Connector

**NATL-10** 10' Power Line  
**NATL-30** 30' Power Line

For use with Class II drivers. Carries output from driver, requires power line interconnectors.

**NATL-302W** 5" Splitter

Splits power line connector into two separate leads, requires power line cable.



Touch Dimmer / Motion Sensor

**NATL-518W**

72W max., no power fail memory, touch on/off and hold to dim.

**NAL-856W** Motion Sensor

12' Max activation distance; 20 second auto off; 120° detection zone; Max Load 4A.



2' Wire Raceway

**NATL-422B** Black  
**NATL-422W** White

Field-cuttable plastic. Includes wire channel with double faced tape and cover.



Low Voltage Splice Box

**NATL-415W**

Use to join low voltage lead to power line connector.



Terminal/Splitter Block

**NATL-407** 4-Way  
2-3/8" L x 1-1/8" W x 7/8" D

**NATL-408** 8-Way  
4" L x 1-1/8" W x 7/8" D



16AWG In-Wall Rated Wire

**NATL-W16-2-250** 16AWG 250'  
**NATL-W16-2-20** 16AWG 20'

16 AWG low voltage Class II two-conductor, in-wall rated wire.



Wire Clip, Plastic - 10pk

**NATL-404W** J-Clip  
**NATL-405W** Over the Wire  
**NATL-406W** Square Clip