

# NQZ-4

## 4" Quartz Tunable Wattage / Tunable White Reflectors

Source: 6W to 15W LED

500lm to 1200lm

Type

Project

Catalog No.

Notes

### PRODUCT DESCRIPTION

Quartz Series series is an architectural and commercial grade LED high lumen downlight. Each luminaire includes two tunable switches; Tunable Wattage allows the end user to determine the lumen output & Tunable White allows for selectable kelvin temperature. Reflectors include two tension steel spring clips, which allow the luminaires to install without any frame-in or housing with easy installation.

### FEATURES

- No frame-in or housing required
- Easy installation for retrofit, remodel or new construction applications
- Tunable Wattage switch allows for selectable lumen outputs from 500lm to 1200lm
- Tunable White switch allows for selectable kelvin temperatures in 3000K, 3500K or 4000K @ 90+ CRI
- Field changeable reflector allows for easy customization
- 0-10V dimming
- 5-year limited warranty
- ENERGY STAR certified
- cULus Listed for Wet Locations

### SPECIFICATION

**Reflector:** Aluminum spun reflector with deep set diffused lens for excellent visual comfort while providing high lumen output. Each reflector comes standard with matte powder white finish, optional haze and diffused snap-in reflectors are available and field changeable.

**Tunable Switches:** Each luminaire includes two switches on the top of the driver enclosure. Tunable wattage switch changes the lumen output and wattage. Tunable white switch changes the kelvin temperature.

**Minimum Clearances:** Non-IC luminaire requires a minimum clearance of 3" from thermal insulation and 1/2" from adjacent building components.

**Mounting:** Pre-wired 4" junction box with through branch circuit wiring (3 in / 3 out). No housing is required, two tensions steel spring clips accommodate ceiling thickness from 1/2" to 1-1/4". New construction frame-in kit is available, must specify NQZ-4R-F.

### ELECTRICAL

**Input Voltage:** 120-277V

**Lumens / Wattage:** 500lm / 6W, 750lm / 9W, 950lm / 12W and 1200lm / 15W

**Beam Spread:** 83° Wide Flood

**Color Temperature:** 3000K, 3500K and 4000K

**CRI:** 90+CRI

**Operating Temperature:** 45°C max.

**Lifetime:** 50,000 hours @ L70

**Dimming:** Dimmable down to 10% with 0-10V dimmer

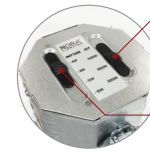
[Click Here](#) or check complete dimmer list at [www.NoraLighting.com](http://www.NoraLighting.com) in the "Compatibility" page under "Resources" tab

### LABELS AND LISTINGS

- cULus Listed for Wet Locations
- ENERGY STAR certified
- [5-Year Limited Warranty](#)
- FCC compliant



### PRODUCT IMAGES AND DIMENSIONS



#### Tunable White

Selectable CCT  
3000K, 3500K, or 4000K

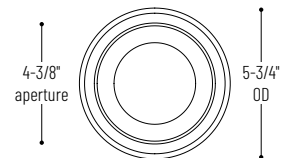
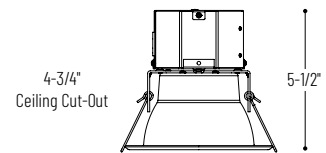
#### Tunable Wattage

Selectable Lumen  
500lm, 750lm, 950lm, or 1200lm



#### NQZ-41TWTW-MPW

4" Quartz with Matte Powder White Reflector



#### NQZ-41TWTW-MPW / NQZ-41REFLC

4" Quartz with Specular Clear Reflector



#### NQZ-41TWTW-MPW / NQZ-41REFLD

4" Quartz with Clear Diffused Reflector



#### NQZ-41TWTW-MPW / NQZ-41REFLHZ

4" Quartz with Haze Reflector

### 4" Quartz Tunable Wattage / Tunable White Reflector

Reflector Type	Lumens / Wattage	Color Temperature	Reflector / Flange Finish
<b>NQZ-41</b> = 4" Open Reflector	<b>TW</b> = 500lm, 750lm, 950lm, 1200lm	<b>TW</b> = 3000K, 3500K, 4000K	<b>-MPW</b> = Matte Powder White

### Optional Accessories

#### Description

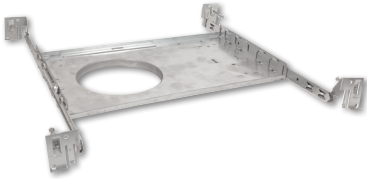
- NQZ-4R-F** = 4" New Construction Frame-In
- NQZ-41REFLC** = 4" Specular Clear Snap-in Reflector
- NQZ-41REFLD** = 4" Clear Diffused Snap-in Reflector
- NQZ-41REFLHZ** = 4" Haze Snap-in Reflector

Example: **NQZ-41TWTW-MPW** = 4" Quartz Downlight, Tunable Wattage, Tunable White, Matte Powder White

# NQZ-4

4" Quartz Tunable Wattage / Tunable White Accessories

Type \_\_\_\_\_  
Project \_\_\_\_\_  
Catalog No. \_\_\_\_\_  
Notes \_\_\_\_\_



New Construction Frame-In Kit

### NQZ-4R-F

For new construction pre-wiring and easier layout planning.



Specular Clear Reflector

### NQZ-41REFLC

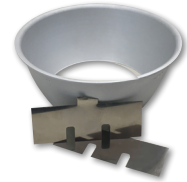
Snap-in reflector is field changeable and fits over 4" Quartz reflector.



Clear Diffused Reflector

### NQZ-41REFLD

Snap-in reflector is field changeable and fits over 4" Quartz reflector.



Haze Reflector

### NQZ-41REFLHZ

Snap-in reflector is field changeable and fits over 4" Quartz reflector.

# PHOTOMETRICS

## 4" Quartz Tunable Wattage / Tunable White Reflectors

Type

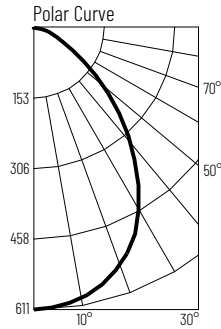
Project

Catalog No.

Notes

### Test Information

Test Number: NTR1213  
 Part Number: NQZ-41TWTW-MPW  
 Beam Spread: 83° Wide Flood  
 Lumens: 1155lm  
 Wattage: 15.2W  
 Efficacy: 76lpw  
 CCT / CRI: 3000K / 90 CRI  
 Spacing Criteria (0°-180): 1.14  
 Spacing Criteria (90°-270): 1.14



### Illuminance at a Distance

Distance from Luminaire	FC at Nadir	Beam Diameter
4'	38.2fc	7'-2"
6'	17fc	10'-10"
8'	9.6fc	14'-5"
10'	6.1fc	18'
12'	4.2fc	21'-7"

### Zonal Lumen Summary

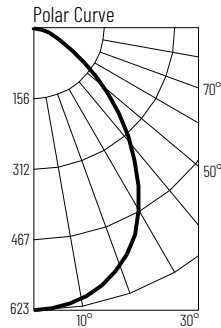
Zone	Lumens	% Luminaire
0-30	452	39.2
0-40	640	55.4
0-60	1032	89.4
0-90	1149	99.5
90-180	6	0.5
0-180	1155	100

### Candela Table

Vertical Angles	Candela
0	611
5	607
15	575
25	510
35	398
45	264

### Test Information

Test Number: NTR1214  
 Part Number: NQZ-41TWTW-MPW  
 Beam Spread: 83° Wide Flood  
 Lumens: 1172lm  
 Wattage: 14.68W  
 Efficacy: 80lpw  
 CCT / CRI: 3500K / 90 CRI  
 Spacing Criteria (0°-180): 1.14  
 Spacing Criteria (90°-270): 1.14



### Illuminance at a Distance

Distance from Luminaire	FC at Nadir	Beam Diameter
4'	38.9fc	7'-1"
6'	17.3fc	10'-8"
8'	9.7fc	14'-2"
10'	6.2fc	17'-10"
12'	4.3fc	21'-5"

### Zonal Lumen Summary

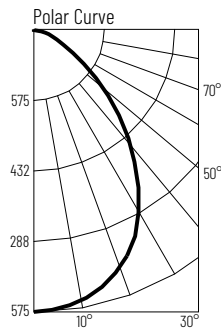
Zone	Lumens	% Luminaire
0-30	460	39.3
0-40	650	55.4
0-60	1048	89.4
0-90	1166	99.5
90-180	6	0.5
0-180	1172	100

### Candela Table

Vertical Angles	Candela
0	623
5	618
15	587
25	518
35	401
45	267

### Test Information

Test Number: NTR1215  
 Part Number: NQZ-41TWTW-MPW  
 Beam Spread: 83° Wide Flood  
 Lumens: 1079lm  
 Wattage: 14.93W  
 Efficacy: 72lpw  
 CCT / CRI: 4000K / 90 CRI  
 Spacing Criteria (0°-180): 1.14  
 Spacing Criteria (90°-270): 1.14



### Illuminance at a Distance

Distance from Luminaire	FC at Nadir	Beam Diameter
4'	36fc	7'-1"
6'	16fc	10'-5"
8'	9fc	14'-2"
10'	5.8fc	17'-8"
12'	4fc	21'-2"

### Zonal Lumen Summary

Zone	Lumens	% Luminaire
0-30	424	39.3
0-40	598	55.4
0-60	965	89.4
0-90	1074	99.5
90-180	6	0.5
0-180	1079	100

### Candela Table

Vertical Angles	Candela
0	575
5	571
15	542
25	477
35	367
45	245