

NM2-2SB

2" M2 Square LED Recessed Baffle

Source: 8W or 10W LED
600lm or 850lm

Type
Project
Catalog No.
Notes

PRODUCT DESCRIPTION

M2 downlight series features quality and convenience with easy installation for insulated or non-insulated applications.

FEATURES

- No housing required - IC Air-Tight rated
- Easy installation for remodel or new construction applications
- Quick disconnect allows for extended lengths
- 600lm or 850lm LED packages
- 2700K or 3000K @ 90+ CRI
- Triac or ELV dimming
- 5-year limited warranty
- ENERGY STAR certified
- cETLus Listed for Damp Locations

SPECIFICATION

Construction: Die-cast aluminum trims available in matte black or matte powder white finish.

Air Flow Restriction: Luminaire has factory installed gasket to restrict airflow from room into ceiling plenum to <2CFM (cubic feet per minute) in accordance with ASTM-283 Air-Tight requirements.

Clearance: IC rated luminaires are rated for direct contact with insulation (not spray foam insulation), no minimum clearance is required.

Junction Box: Prewired junction box includes quick connect to LED fixtures for ease of installation. Junction box includes two (600lm) or four (850lm) 1/2" trade size knockouts and snap on cover with 7" quick connect wire. Luminaire includes 5" (600lm) or 4" (850lm) quick connect wire.

Mounting: No housing is required, two tensions steel spring clips secure luminaire to ceiling. Accommodates ceiling thickness up to 3/4". New construction frame-in kit is available, see accessories.

ELECTRICAL

Input Voltage: 120V

Lumens / Wattage: 60 = 600lm / 8W; 85 = 850lm / 10W

Color Temperature: 2700K or 3000K

CRI: 90+CRI

Beam Spread: 37° Flood

Operating Temp.: 60 = 0°C to 40°C ambient temperature; 85 = 0°C to 25°C ambient temperature

Lifetime: 60,000 hours @ L70

Dimming: Dimmable down to 10% with Triac or ELV

[Click Here](#) or check complete dimmer list at www.NoraLighting.com in the "Compatibility" page under "Resources" tab

OPTIONAL MOUNTING ACCESSORIES

NM2-2R-F: New Construction Frame-In Plate

NM2-EW-4: 4' Quick Connect Linkable Extension Cable

NM2-EW-10: 10' Quick Connect Linkable Extension Cable

LABELS AND LISTINGS

- cETLus Listed for Damp Locations
- ENERGY STAR certified
- [5-Year Limited Warranty](#)
- FCC compliant
- Certified to the high efficacy requirements of California Title 24 JA8-2019

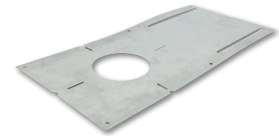
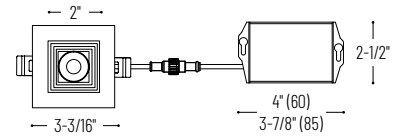
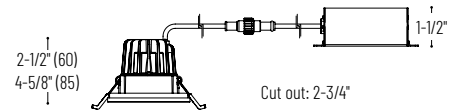


PRODUCT IMAGES AND DIMENSIONS



NM2-2SB60XXMPW
600lm
Matte Powder White

NM2-2SB85XXBB
850lm
Matte Black



NM2-2R-F
New Construction Frame-In Plate



NM2-EW-4 / NM2-EW-10
Quick Connect Extension Cable

2" M2 Square LED Recessed Baffle

Trim Type	Lumens / Wattage	Color Temperature / CRI	Finish
NM2-2SB = 2" Square Baffle	60 = 600lm / 8W	27 = 2700K / 90 CRI	BB = Matte Black
	85 = 850lm / 10W	30 = 3000K / 90 CRI	MPW = Matte Powder White

Optional Mounting Accessories

Description
NM2-2R-F = New Construction Frame-In Plate
NM2-EW-4 = 4' Quick Connect Extension Cable
NM2-EW-10 = 10' Quick Connect Extension Cable

Example: **NM2-2SB6030MPW** = 2" M2 Square LED Recessed Baffle, 600lm / 8W, 3000K / 90 CRI, Matte Powder White

NM2-2SB

2" M2 Square LED Recessed Baffle Accessories

Type	_____
Project	_____
Catalog No.	_____
Notes	_____



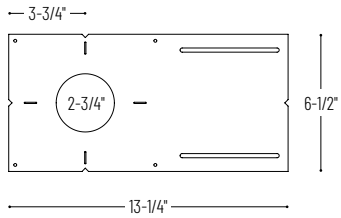
New Construction Frame-In Plate



Quick Connect Extension Linkable Cables

NM2-2R-F

For new construction pre-wiring and easier layout planning.



NM2-EW-4

4' Cable

NM2-EW-10

10' Cable

Use to extend the length between luminaire and driver enclosure. Can be connected together to create custom lengths. Maximum length between luminaire and driver is 40'.

PHOTOMETRICS

2" M2 Square LED Recessed Baffle

Type

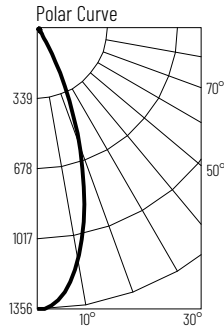
Project

Catalog No.

Notes

Test Information

Test Number: NTR1200
 Part Number: NM2-2SB6027MPW
 Beam Spread: 37° Flood
 Lumens: 615lm
 Wattage: 8.24W
 Efficacy: 75lpw
 CCT / CRI: 2700K / 90 CRI
 Spacing Criteria (0°-180): 0.6
 Spacing Criteria (90°-270): 0.62



Illuminance at a Distance

Distance from Luminaire	FC at Nadir	Beam Diameter
2'	339fc	1'-4"
4'	84.7fc	2'-7"
6'	37.7fc	3'-11"
8'	21.2fc	5'-2"
10'	13.6fc	6'-6"

Zonal Lumen Summary

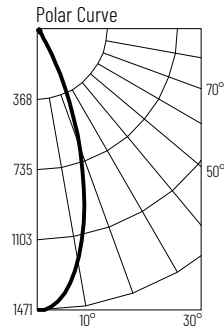
Zone	Lumens	% Luminaire
0-30	513	83.4
0-40	562	91.5
0-60	596	96.9
0-90	612	99.5
90-180	3	0.5
0-180	615	100

Candela Table

Vertical Angles	Candela
0	1356
5	1300
15	859
25	294
35	48
45	20

Test Information

Test Number: NTR1201
 Part Number: NM2-2SB6030MPW
 Beam Spread: 37° Flood
 Lumens: 644lm
 Wattage: 8.18W
 Efficacy: 79lpw
 CCT / CRI: 3000K / 90 CRI
 Spacing Criteria (0°-180): 0.62
 Spacing Criteria (90°-270): 0.62



Illuminance at a Distance

Distance from Luminaire	FC at Nadir	Beam Diameter
2'	367fc	1'-4"
4'	91.8fc	2'-8"
6'	40.8fc	4'
8'	23fc	5'-4"
10'	14.7fc	6'-8"

Zonal Lumen Summary

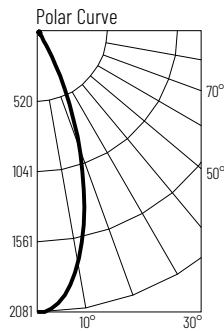
Zone	Lumens	% Luminaire
0-30	547	85
0-40	587	91.2
0-60	623	96.8
0-90	641	99.5
90-180	3	0.5
0-180	644	100

Candela Table

Vertical Angles	Candela
0	1469
5	1416
15	952
25	327
35	50
45	24

Test Information

Test Number: NTR1501
 Part Number: NM2-2SB8530MPW
 Beam Spread: 36° Flood
 Lumens: 873lm
 Wattage: 10.13W
 Efficacy: 86lpw
 CCT / CRI: 3000K / 90 CRI
 Spacing Criteria (0°-180): 0.6
 Spacing Criteria (90°-270): 0.6



Illuminance at a Distance

Distance from Luminaire	FC at Nadir	Beam Diameter
2'	519fc	1'-4"
4'	130fc	2'-7"
6'	57.7fc	3'-11"
8'	32.5fc	5'-2"
10'	20.8fc	6'-5"

Zonal Lumen Summary

Zone	Lumens	% Luminaire
0-30	748	85.6
0-40	799	91.5
0-60	846	96.9
0-90	872	99.8
90-180	2	0.2
0-180	873	100

Candela Table

Vertical Angles	Candela
0	2077
5	1971
15	1288
25	421
35	56
45	31