

# NM2-2RG

2" M2 Round LED Recessed Gimbal

Source: 6W or 8W LED

400lm or 600lm

## PRODUCT DESCRIPTION

M2 downlight series features quality and convenience with easy installation for insulated or non-insulated applications. Luminaires can be configured into square trim with an accessory and produces over 600 lumens.

## FEATURES

- No housing required - IC Air-Tight rated
- Easy installation for remodel or new construction applications
- Square trim available for an alternative appearance
- Quick disconnect allows for extended lengths
- 400lm or 600lm LED packages
- 2700K or 3000K @ 90+ CRI
- Triac or ELV dimming
- 5-year limited warranty
- ENERGY STAR certified
- cETLus Listed for Damp Locations

## SPECIFICATION

**Construction:** Die-cast aluminum trims available in matte black or matte powder white finish. Gimbal trim is adjustable up to 15°. Optional field changeable square trim is available.

**Air Flow Restriction:** Luminaire has factory installed gasket to restrict airflow from room into ceiling plenum to <2CFM (cubic feet per minute) in accordance with ASTM-283 Air-Tight requirements.

**Clearance:** IC rated luminaires are rated for direct contact with insulation (not spray foam insulation), no minimum clearance is required.

**Junction Box:** Prewired junction box includes quick connect to LED fixtures for ease of installation. Junction box includes two 1/2" trade size knockouts and snap on cover with 7" quick connect wire. Luminaire includes 5" quick connect wire.

**Mounting:** No housing is required, two tensions steel spring clips secure luminaire to ceiling. Accommodates ceiling thickness up to 3/4". New construction frame-in kit is available, see accessories.

## ELECTRICAL

**Input Voltage:** 120V

**Lumens / Wattage:**

**40** = 400lm / 6W; **60** = 600lm / 8W

**Color Temperature:** 2700K or 3000K

**CRI:** 90+CRI

**Beam Spread:** 40° Flood

**Operating Temp.:** 0°C to 40°C ambient temperature

**Lifetime:** 60,000 hours @ L70

**Dimming:** Dimmable down to 10% with Triac or ELV

[Click Here](#) or check complete dimmer list at [www.NoraLighting.com](http://www.NoraLighting.com) in the "Compatibility" page under "Resources" tab

## OPTIONAL TRIM ACCESSORIES

**NM2-2SGT:** Square Trim for NM2-2RG, Black or White

## OPTIONAL MOUNTING ACCESSORIES

**NM2-2R-F:** New Construction Frame-In Plate

**NM2-EW-4:** 4' Quick Connect Linkable Extension Cable

**NM2-EW-10:** 10' Quick Connect Linkable Extension Cable

## LABELS AND LISTINGS

- cETLus Listed for Damp Locations
- ENERGY STAR certified
- [5-Year Limited Warranty](#)
- FCC compliant
- Certified to the high efficacy requirements of California Title 24 JA8-2019



Type \_\_\_\_\_

Project \_\_\_\_\_

Catalog No. \_\_\_\_\_

Notes \_\_\_\_\_

## PRODUCT IMAGES AND DIMENSIONS



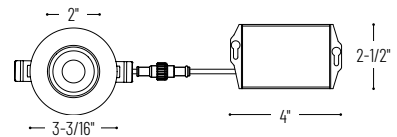
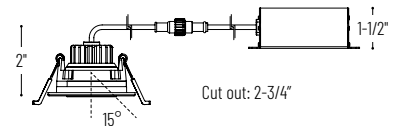
**NM2-2RGMPW**  
Matte Powder White

**NM2-2RGMPW + NM2-2SGTMPW**  
Matte Powder White

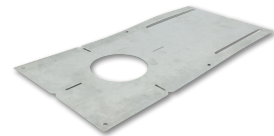


**NM2-2RG6BB**  
Matte Black

**NM2-2RG6BB + NM2-2SGTB**  
Matte Black



**NM2-2SGT**  
Square Trim



**NM2-2R-F**  
New Construction Frame-In Plate



**NM2-EW-4 / NM2-EW-10**  
Quick Connect Extension Cable

## 2" M2 Round LED Recessed Gimbal

Trim Type	Lumens / Wattage	Color Temperature / CRI	Finish
<b>NM2-2RG</b> = 2" Round Gimbal	<b>40</b> = 400lm / 6W	<b>27</b> = 2700K / 90 CRI	<b>BB</b> = Matte Black
	<b>60</b> = 600lm / 8W	<b>30</b> = 3000K / 90 CRI	<b>MPW</b> = Matte Powder White

## M2 Trim Accessories

Accessory Type	Finish
<b>NM2-2SGT</b> = Square Trim for NM2-2RG	<b>B</b> = Matte Black
	<b>MPW</b> = Matte Powder White

## Optional Mounting Accessories

Description
<b>NM2-2R-F</b> = New Construction Frame-In Plate
<b>NM2-EW-4</b> = 4' Quick Connect Extension Cable
<b>NM2-EW-10</b> = 10' Quick Connect Extension Cable

Example: **NM2-2RG6030MPW** = 2" M2 Round LED Recessed Gimbal, 600lm / 8W, 3000K / 90 CRI, Matte Powder White

# NM2-2RG

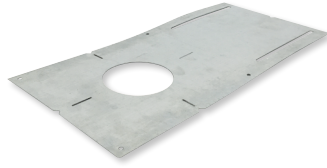
## 2" M2 Round LED Recessed Gimbal Accessories

Type	_____
Project	_____
Catalog No.	_____
Notes	_____



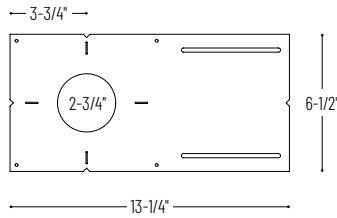
Square Trim for NM2-2RG

**NM2-2SGTB** Matte Black  
**NM2-2SGTMPW** Matte Powder White  
Converts the round trim included with NM2-2RG gimbal into a square trim



New Construction Frame-In Plate

**NM2-2R-F**  
For new construction pre-wiring and easier layout planning.



Quick Connect Extension Linkable Cables

**NM2-EW-4** 4' Cable  
**NM2-EW-10** 10' Cable  
Use to extend the length between luminaire and driver enclosure. Can be connected together to create custom lengths. Maximum length between luminaire and driver is 40'.

# PHOTOMETRICS

## 2" M2 Round LED Recessed Gimbal

Type

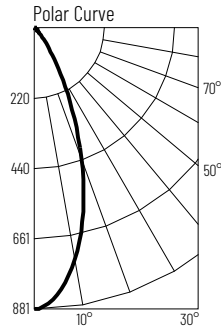
Project

Catalog No.

Notes

### Test Information

Test Number: NTR11356  
 Part Number: NM2-2RG4027MPW  
 Beam Spread: 40° Flood  
 Lumens: 486lm  
 Wattage: 6.3W  
 Efficacy: 77lpw  
 CCT / CRI: 2700K / 90 CRI  
 Spacing Criteria (0°-180): 0.66  
 Spacing Criteria (90°-270): 0.64



### Illuminance at a Distance

Distance from Luminaire	FC at Nadir	Beam Diameter
2'	217fc	1'-6"
4'	54.2fc	3'
6'	24.1fc	4'-5"
8'	13.6fc	5'-11"
10'	8.7fc	7'-5"

### Zonal Lumen Summary

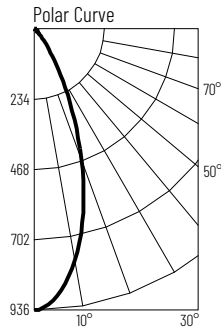
Zone	Lumens	% Luminaire
0-30	373	76.7
0-40	439	90.2
0-60	471	96.9
0-90	484	99.5
90-180	2	0.5
0-180	486	100

### Candela Table

Vertical Angles	Candela
0	867
5	827
15	598
25	302
35	109
45	28

### Test Information

Test Number: NTR11365  
 Part Number: NM2-2RG4030MPW  
 Beam Spread: 40° Flood  
 Lumens: 514lm  
 Wattage: 6.3W  
 Efficacy: 82lpw  
 CCT / CRI: 3000K / 90 CRI  
 Spacing Criteria (0°-180): 0.66  
 Spacing Criteria (90°-270): 0.66



### Illuminance at a Distance

Distance from Luminaire	FC at Nadir	Beam Diameter
2'	233fc	1'-6"
4'	58.3fc	2'-11"
6'	25.9fc	4'-5"
8'	14.6fc	5'-11"
10'	9.3fc	7'-5"

### Zonal Lumen Summary

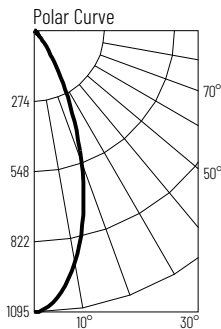
Zone	Lumens	% Luminaire
0-30	400	77.9
0-40	467	90.8
0-60	499	97
0-90	512	99.5
90-180	2	0.5
0-180	514	100

### Candela Table

Vertical Angles	Candela
0	932
5	891
15	637
25	315
35	106
45	25

### Test Information

Test Number: NTR11354  
 Part Number: NM2-2RG6027MPW  
 Beam Spread: 40° Flood  
 Lumens: 598lm  
 Wattage: 7.7W  
 Efficacy: 77lpw  
 CCT / CRI: 2700K / 90 CRI  
 Spacing Criteria (0°-180): 0.66  
 Spacing Criteria (90°-270): 0.66



### Illuminance at a Distance

Distance from Luminaire	FC at Nadir	Beam Diameter
2'	274fc	1'-5"
4'	68.5fc	2'-11"
6'	30.4fc	4'-4"
8'	17.1fc	5'-10"
10'	11fc	7'-2"

### Zonal Lumen Summary

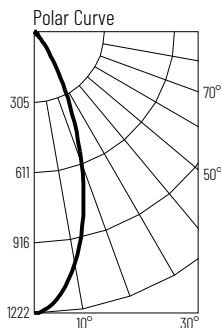
Zone	Lumens	% Luminaire
0-30	465	77.8
0-40	541	90.5
0-60	580	97
0-90	595	99.5
90-180	3	0.5
0-180	598	100

### Candela Table

Vertical Angles	Candela
0	1095
5	1046
15	745
25	360
35	117
45	31

### Test Information

Test Number: NTR11355  
 Part Number: NM2-2RG6030MPW  
 Beam Spread: 40° Flood  
 Lumens: 658lm  
 Wattage: 7.9W  
 Efficacy: 83lpw  
 CCT / CRI: 3000K / 90 CRI  
 Spacing Criteria (0°-180): 0.64  
 Spacing Criteria (90°-270): 0.64



### Illuminance at a Distance

Distance from Luminaire	FC at Nadir	Beam Diameter
2'	305fc	1'-5"
4'	76.4fc	2'-11"
6'	33.9fc	4'-4"
8'	19.1fc	5'-10"
10'	12.2fc	7'-2"

### Zonal Lumen Summary

Zone	Lumens	% Luminaire
0-30	514	78
0-40	596	90.5
0-60	639	97.1
0-90	655	99.5
90-180	3	0.5
0-180	658	100

### Candela Table

Vertical Angles	Candela
0	1222
5	1665
15	828
25	393
35	127
45	35