

NLTH-61TW-MPW

6" Theia LED Downlight with Selectable CCT

Source: 15W

Up to 1400lm

Type

Project

Catalog No.

Notes

PRODUCT DESCRIPTION

Theia LED luminaires are commercial grade downlights designed for easy installation into new construction or remodel applications. Tunable white luminaires include an integral color temperature switch located on the junction box of each luminaire with a quick connect that allows for easy disconnect and mounting in the ceiling.

FEATURES

- Five different color temperatures in one luminaire
- No housing required and includes junction box with class 2 driver
- Quick installation and cost savings
- Junction box includes color temperature switch
- IC Air-Tight rated
- Junction box includes color temperatures switch
- Five color temperatures in each fixture (2700K / 3000K / 3500K / 4000K / 5000K)
- Triac or ELV dimming
- cETLus Listed for Wet Locations
- 5-year limited warranty

SPECIFICATION

Construction: Aluminum luminaire with spring clips for easy installation. Gasket included for air-tight and wet location listing without additional caulking.

Air Flow Restriction: Luminaire has factory installed gasket to restrict airflow from room into ceiling plenum to <2CFM (cubic feet per minute) in accordance with ASTM-283 Air-Tight requirements.

Junction Box: Prewired junction box includes quick connect to LED fixtures for ease of installation. Junction box includes four 1/2" knockouts, two keyhole slots and snap on cover. Maximum of 6 No. 12 AWG or Maximum of 8 No. 14 AWG through branch circuit conductor suitable for 90°C permitted in box. [Fixture wire length: 7-1/2" and Junction box wire length: 10-1/2"]

Mounting: No housing is required, two tensions steel spring clips secure luminaires to the ceiling. Luminaires accept ceiling thicknesses from 3/8" to 5/8". New construction frame-in or plate are available (ordered separately), not required.

Minimum clearance: "IC" Insulated ceiling luminaires are direct contact rated; no minimum clearance is required.

ELECTRICAL

Voltage: 120Vac, 0.135A, 60Hz

Lumens / Wattage: Up to 1400lm / 15W

Color Temperature: Selectable CCT: 2700K / 3000K / 3500K / 4000K / 5000K (Note: Preset to 3000K)

Color Rendering Index: 90+CRI

Beam Spread: 98° Wide Flood

Operating Temperature: 0°C to 35°C ambient temperature

Lifetime: 50,000 hours @ L70

Dimming: Dimmable down to 10% with Triac or ELV dimmer

[Click Here](#) or check complete dimmer list at www.NoraLighting.com in the "Compatibility" page under "Resources" tab

OPTIONAL ACCESSORIES

[NEFLINTW-6R-F](#): New Construction Frame-In

[NF-R246](#): Universal New Construction Frame-In

[NFP-R613](#): New Construction Plate

LABELS AND LISTINGS

- cETLus Listed for Wet location
- ENERGY STAR certified
- Certified to the high efficacy requirements of California Title 24 JA8-2019
- [5-Year Limited Warranty](#)
- FCC Compliant



Performance Data		
Part Number	Lumens	CCT
NLTH-61TW-MPW	1285lm	2700K
NLTH-61TW-MPW	1361lm	3000K
NLTH-61TW-MPW	1421lm	3500K
NLTH-61TW-MPW	1444lm	4000K
NLTH-61TW-MPW	1445lm	5000K

PRODUCT IMAGES AND DIMENSIONS



6" Theia LED Downlight with Selectable CCT

Lumens / Wattage / Finish

NLTH-61TW-MPW = 1400lm / 15W / Matte Powder White finish

Optional Accessories

Description

NEFLINTW-6R-F = New Construction Frame-In
NF-R246 = Universal New Construction Frame-In
NFP-R613 = New Construction Plate

Example: **NLTH-61TW-MPW** = 6" Theia LED Downlight with Selectable CCT, Matte Powder White Finish

NLTH-61TW-MPW

6" Theia LED Downlight with Selectable CCT Accessories

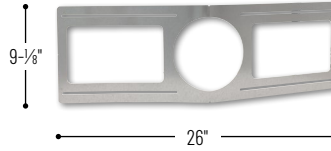
Type	_____
Project	_____
Catalog No.	_____
Notes	_____



New Construction Frame-In



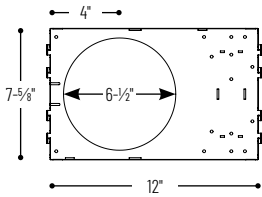
Universal New Construction Frame-In



New Construction Plate

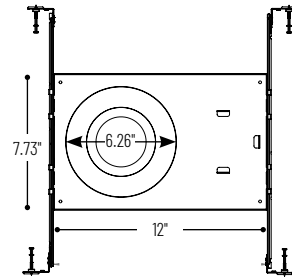
NEFLINTW-6R-F

New construction frame-in can be used to assist installing canless recessed downlighting.



NF-R246

Universal new construction frame-in can be used to assist installing can-less recessed downlighting.



NFP-R613

New construction frame-in can be used to assist installing canless recessed downlighting.

PHOTOMETRICS

6" Theia LED Tunable Downlight

Type

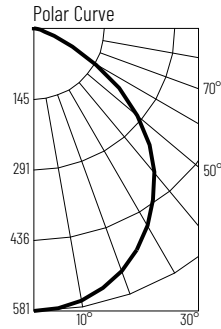
Project

Catalog No.

Notes

Test Information

Test Number: NTR1754R2
 Part Number: NLTH-61TW-MPW
 Beam Spread: 98° Wide Flood
 Lumens: 1285lm
 Wattage: 14.62W
 Efficacy: 88lpw
 CCT / CRI: 2700K / 90 CRI
 Spacing Criteria (0°-180°): 1.22
 Spacing Criteria (90°-270°): 1.22



Illuminance at a Distance

Distance from Luminaire	FC at Nadir	Beam Diameter
6'	16.1fc	13'-10"
8'	9.1fc	18'-5"
10'	5.8fc	23'-1"
12'	4fc	27'-8"
14'	3fc	32'-4"

Zonal Lumen Summary

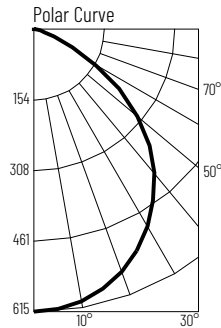
Zone	Lumens	% Luminaire
0-30	440	34.2
0-40	706	54.9
0-60	1156	89.9
0-90	1285	100
90-180	0	0
0-180	1285	100

Candela Table

Vertical Angles	Candela
0	581
5	578
15	553
25	502
35	430
45	339

Test Information

Test Number: NTR1755R2
 Part Number: NLTH-61TW-MPW
 Beam Spread: 98° Wide Flood
 Lumens: 1361lm
 Wattage: 14.38W
 Efficacy: 95lpw
 CCT / CRI: 3000K / 90 CRI
 Spacing Criteria (0°-180°): 1.22
 Spacing Criteria (90°-270°): 1.22



Illuminance at a Distance

Distance from Luminaire	FC at Nadir	Beam Diameter
6'	17.1fc	13'-10"
8'	9.6fc	18'-5"
10'	6.2fc	23'-1"
12'	4.3fc	27'-8"
14'	3.1fc	32'-4"

Zonal Lumen Summary

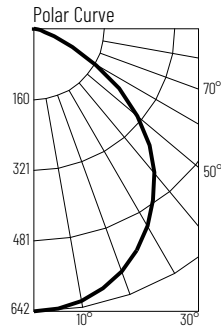
Zone	Lumens	% Luminaire
0-30	465	34.2
0-40	747	54.9
0-60	1224	89.9
0-90	1361	100
90-180	0	0
0-180	1361	100

Candela Table

Vertical Angles	Candela
0	615
5	612
15	585
25	532
35	454
45	359

Test Information

Test Number: NTR1756RR
 Part Number: NLTH-61TW-MPW
 Beam Spread: 98° Wide Flood
 Lumens: 1421lm
 Wattage: 14.04W
 Efficacy: 101lpw
 CCT / CRI: 3500K / 90 CRI
 Spacing Criteria (0°-180°): 1.22
 Spacing Criteria (90°-270°): 1.22



Illuminance at a Distance

Distance from Luminaire	FC at Nadir	Beam Diameter
6'	17.8fc	13'-10"
8'	10fc	18'-6"
10'	6.4fc	23'-1"
12'	4.5fc	27'-8"
14'	3.3fc	32'-4"

Zonal Lumen Summary

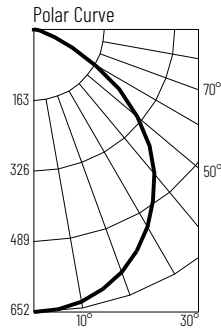
Zone	Lumens	% Luminaire
0-30	486	34.2
0-40	780	54.9
0-60	1277	89.9
0-90	1421	100
90-180	0	0
0-180	1421	100

Candela Table

Vertical Angles	Candela
0	642
5	639
15	610
25	555
35	474
45	375

Test Information

Test Number: NTR1757R2
 Part Number: NLTH-61TW-MPW
 Beam Spread: 98° Wide Flood
 Lumens: 1444lm
 Wattage: 14.19W
 Efficacy: 102lpw
 CCT / CRI: 4000K / 90 CRI
 Spacing Criteria (0°-180°): 1.2
 Spacing Criteria (90°-270°): 1.22



Illuminance at a Distance

Distance from Luminaire	FC at Nadir	Beam Diameter
6'	18.1fc	13'-10"
8'	10.2fc	18'-6"
10'	6.5fc	23'-1"
12'	4.5fc	27'-8"
14'	3.3fc	32'-4"

Zonal Lumen Summary

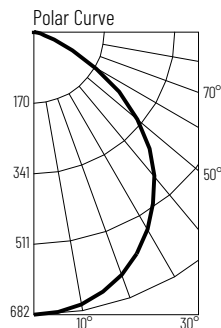
Zone	Lumens	% Luminaire
0-30	494	34.2
0-40	793	54.9
0-60	1298	89.9
0-90	1444	100
90-180	0	0
0-180	1444	100

Candela Table

Vertical Angles	Candela
0	652
5	650
15	620
25	562
35	481
45	380

Test Information

Test Number: NTR1758R2
 Part Number: NLTH-61TW-MPW
 Beam Spread: 95° Wide Flood
 Lumens: 1445lm
 Wattage: 14.63W
 Efficacy: 99lpw
 CCT / CRI: 5000K / 90 CRI
 Spacing Criteria (0°-180°): 1.2
 Spacing Criteria (90°-270°): 1.2



Illuminance at a Distance

Distance from Luminaire	FC at Nadir	Beam Diameter
6'	18.9fc	13'-4"
8'	10.7fc	17'-8"
10'	6.8fc	22'-2"
12'	4.7fc	26'-7"
14'	3.5fc	31'

Zonal Lumen Summary

Zone	Lumens	% Luminaire
0-30	515	35.7
0-40	824	57.1
0-60	1323	91.6
0-90	1445	100
90-180	0	0
0-180	1445	100

Candela Table

Vertical Angles	Candela
0	682
5	679
15	646
25	585
35	499
45	386