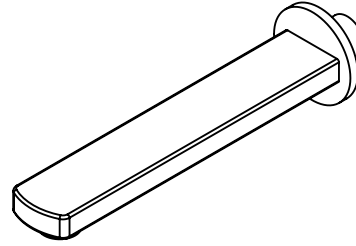




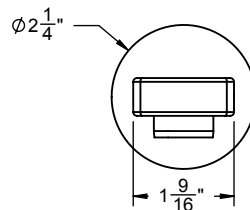
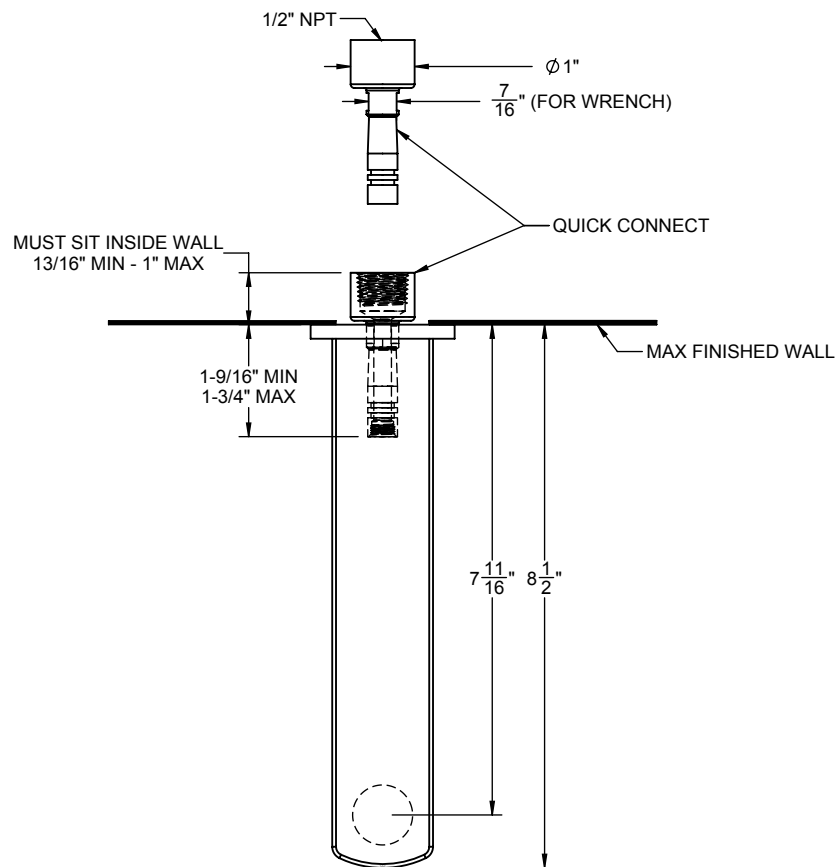
### Features

- 7-11/16" wall to center of flow
- Max flow rate: 10.0 gpm (37.8 L/min)
- Quick connect
- For use with StyleTherm, 3-VR or 2-VR valves
- All brass construction
- Over 30 finishes including 13 PVD finishes



### Codes/Standards Applicable

- Product meets or exceeds the following:
- ASME A112.18.1/CSA B125.1



THROUGH-HOLE SPECIFICATIONS		
MIN	RECOMENDED	MAX
SPOUT: $\phi$ 1-1/4"	$\phi$ 1-1/4"	$\phi$ 1-5/8"